

Aging in Place

Safety & Accessibility Solutions

Designed for the home, assisted living & retirement communities, and rehabilitation centers



AFFORDABLE SOLUTIONS FROM
Rane **AWAIT**



- "We understand the importance of adapting your environment to your needs."

Our mission at Rane is to provide it's customers with safety and accessibility solutions that:

- Greatly improve the daily activities of users and their caregivers.
- Help people with reduced physical ability become more independent
- Improve everyday life and self esteem.

Rane can help.



One Word.....Expertise.

Rane provides expert knowledge in the following:

- Bathing
- Bathroom Accessibility
- Kitchen Accessibility
- Transfer Solutions



Bathing Solutions

When one is aging or becomes disabled at any age, bathing can present challenges. Rane manufactures its products in Sparta, Tennessee and provides a full line bathing solutions. Rane's comprehensive bath tub line is designed to meet the needs of any new or replacement project offering a variety of both residential and healthcare facility models to meet your needs.

Bathroom Safety

Rane offers a variety of solutions to create a truly accessible bathroom, even when space is limited. Some of the unique items offered are height adjustable and 180 degree swivel sinks, toilet accessories such as support arms and height systems, as well as showering items like seats, benches and grab bars.

Kitchen Accessibility

Everyone spends a significant amount of time in the kitchen so creating an environment that adapts to the user is often a necessity more than an option. With innovative technology, Rane brings the cabinet, counters, and tables to the user's reach.

Transfer Solutions

Moving is essential to maintaining health and completing daily life tasks. The options are limitless. Whether you are looking for a simple system to reposition a loved one in bed or transfer them to a wheelchair, or something that takes them from bed to kitchen to bathroom, Rane is your answer.



For more information, please contact Rane for your local representative.

Safety & Accessibility Solutions Guide

TABLE OF CONTENTS

I SAFETY TUBS 6

- i Residential Tubs
- ii Healthcare Facility Tubs
- iii Bathing Lifts
- iv Solutions and Disinfection
- v Bathtub Accessories

II SAFETY SINKS & TOILET ACCESSORIES 12

- i Swing Washbasin
- ii Support Washbasin
- iii Flexi Washbasin
- iv Toilet Support Arms & Accessories
- v Toilevator





III SHOWERING SOLUTIONS

14

- i Shower/Commode Chairs
- ii Folding Shower Seat
- iii. Shower/Changing Bed

IV. GRAB BARS & MOBILITY SYSTEM

16

- i. Grab Bars
- ii. Mobility System

V KITCHEN ACCESSIBILITY

18

- i Kitchen Cabinets
- ii Kitchen Countertops
- iii Kitchen Tables

RANE SAFETY TUBS

Residential Tub Selection

RC2 PACIFIC



Walk-In Bathtub

The **RC2 Pacific** is our most popular walk-in tub that is designed to be built-in or freestanding. The low threshold and wide inward swinging door allows easy access for people with various degrees of mobility. The roomy contoured seat allows the user to sit comfortably and safely in a slightly reclined position. Measuring just 29" (73.6 cm) x 50" (127 cm), the RC2 Pacific provides a bathing solution for homes with narrow doorways and hallways. The maximum weight capacity for this tub is 350 lb (158.8 kg). Standard features include a Roman Deck Mount Valve Package and Handheld Shower Wand, with options including AirSpa and Supreme packages.

RE2 HURON



Bariatric Bathtub

The **RE2 Huron** is a freestanding or built-in tub designed for persons of size. The extra-wide contoured seat allows the person of size to sit comfortably and safely in a slightly reclined position. Measuring just 32.5" (82.5 cm) x 53" (134.6 cm), the RE2 Huron provides a bathing solution for persons of size without losing valuable installation space. The maximum weight capacity for this tub is 450 lb (204 kg). Standard features include a Roman Deck Mount Valve Package and Handheld Shower Wand, with options including AirSpa and Supreme packages.

RM3 SUPERIOR



Side-Entry Bathtub

The **RM3 Superior** is designed to be built-in or freestanding. The roomy contoured seat allows the user to sit comfortably and safely in a slightly reclined position. Measuring 30" (76.2 cm) x 50" (127 cm), the RM3 features a unique door that is designed to clear the commode in small bathrooms where space is a premium. The maximum weight capacity for this tub is 350 lb (158.8 kg). Standard features include a Roman Deck Mount Valve Package and Handheld Shower Wand, with options including AirSpa and Supreme packages.

The AirSpa Package features our CleanRane™ Air Spa System, a hydromassage system which infuses preheated air bubbles into the water. Refer to page 10 for further information on AirSpa.

RH6 ST. CROIX

Side-Entry Bathtub

The **RH6 St. Croix** is designed to be built-in or freestanding. The low threshold, wide side-entry door, and removable transfer device access panel allows easy access for people with various degrees of mobility. Measuring 32" (81.3 cm) x 60" (152.4 cm), the RH6 features a roomy contoured seat, allowing the user to sit comfortably and safely in a slightly reclined position. The maximum weight capacity for this tub is 400 lb (181.4 kg). Standard features include a Roman Deck Mount Valve Package and Handheld Shower Wand, with options including AirSpa and Supreme packages.



RB14 MEDITERRANEAN

Bariatric Side-Entry Bathtub

The **RB14 Mediterranean** is designed specifically for the larger person that needs extra room to bathe. The low threshold and wide side-entry door allows the user to enter and exit the bathtub easily and safely. Measuring 33.5" (85 cm) x 60" (152.4 cm), the RB14 features a 28" (71 cm) extra-wide contoured seat, allowing the larger person to sit comfortably and safely in a slightly reclined position. The maximum weight capacity for this tub is 600 lb (272 kg). Standard features include a Roman Deck Mount Valve Package and Handheld Shower Wand, with options including AirSpa and Supreme packages.



RA2 TAHOE

Compact Bathtub

The **RA2 Tahoe** is a freestanding or built-in tub designed for small to medium size bathrooms with limited space. The roomy contoured seat allows the user to sit comfortably and safely in a slightly reclined position. Measuring just 26" (66 cm) x 48" (122 cm), the RA2 Tahoe provides a bathing solution for homes with narrow doorways and hallways. The maximum weight capacity for this tub is 350 lb (158.8 kg). Standard features include a Roman Deck Mount Valve Package and Handheld Shower Wand, with options including AirSpa and Supreme packages.



RP3460 HUDSON

Cantilevered Bathtub *NEW!!!*

The **RP3460 Hudson** is an easy access bathtub with a patented design resulting from studies into the causes of falls in the bathroom. Results show that entering and exiting the bathtub is a frequent cause of falls, particularly when crossing over the rim of the bathtub. The contoured transfer ledge and recessed rim of the Hudson allow a bather to sit and swing their legs safely over the rim. The maximum weight capacity is 500 lb (226.8 kg). Measuring 33" (83.8 cm) x 60" (152.4 cm), the Hudson is not only a safer bathtub, but also an excellent choice for easy renovations and replacements.



The Supreme Package includes AirSpa, along with Whirlpool, Aromatherapy, and Chromatherapy.

RANE SAFETY TUBS

Healthcare Facility Tub Selection

RJ15 CARIBBEAN



Side-Entry Reservoir Bathing System

- Designed for Assisted Living and/or Skilled Nursing settings.
- Freestanding tub with a reservoir feature which allows the tub to be filled quickly with simple one-touch operations.
- Low threshold and wide side-entry door allows easy access for residents with various degrees of mobility.
- Built-in 26" wide contoured seat allows the resident to sit comfortably and safely in a slightly reclined position.
- 600 lb Weight Capacity.

RG9 VICTORIA



Freestanding Bathing System

- Designed for Assisted Living and/or Skilled Nursing settings.
- Freestanding tub that allows the caregiver 360° unobstructed access to the resident.
- Low threshold and wide side-entry door allows easy access for residents with various degrees of mobility.
- Built-in 26" wide contoured seat allows the resident to sit comfortably and safely in a slightly reclined position.
- For your dependent residents, the RG9 Victoria is specifically designed for use with the RL9 Bath Lift, which provides seamless transfers from bed-to-bath in a safe seated position.
- 600 lb Weight Capacity.

RR7-II ATLANTIC



Reclining Bathing System

- Designed for Assisted Living and/or Skilled Nursing settings.
- Designed for care facilities looking for a more time efficient and labor-saving bathing solution.
- Unique tilting function, which allows residents with challenging conditions to recline in a contoured seat and become immersed in warm water.
- At only 24 gallons to pre-fill the foot well, water usage and the associated costs are greatly reduced.
- Optional Auto-Fill eliminates waiting and/or observation time when pre-filling the bathtub to a preset level.
- Three plumbing options to choose from; Front, Side, or Island configuration.
- 450 lb Weight Capacity.

RS8 GENEVA

Recumbent Bathing System

- Designed to bathe highly dependent residents safely and comfortably.
- Compatible with a wide range of transport and lifting devices.
- Key-hole shape enhances patient comfort with extra room for the shoulders and arms, plus allows the caregiver closer and greater access to bathe the resident.
- Height adjustable model is raised or lowered at the touch of a button and allows the caregiver to work at the proper height.
- Optional Auto-fill eliminates waiting and/or observation time when pre-filling the bathtub to a preset level.
- 600 lb Weight Capacity



RK12 WINNIPEG

Freestanding Bathing System

- Designed for Assisted Living.
- Freestanding tub that allows the caregiver 360° unobstructed access to the resident.
- Low threshold and wide side-entry door allows easy access for residents with various degrees of mobility.
- Built-in contoured seat allows the resident to sit comfortably and safely in a slightly reclined position.
- Designed to create the atmosphere of a luxury spa, the sleek exterior design of the RK12 Winnipeg will give your bathing area an upscale look.
- 600 lb Weight Capacity.



RB14 CASPIAN

Bariatric Bathing System

- Designed specifically for the larger person that needs extra room to bathe.
- The 28" extra-wide contoured seat allows the larger person to sit comfortably and safely in a slightly reclined position.
- Low threshold and wide side-entry door allows easy access for residents with various degrees of mobility.
- Designed to be installed against a wall, giving the caregiver access to the resident from three sides.
- 600 lb Weight Capacity.



RT4 CHESAPEAKE

Built-In Bathing System

- Designed for Assisted Living and/or Skilled Nursing settings.
- Can be installed in an alcove for a more residential or luxury spa appearance.
- Low threshold and wide side-entry door allows easy access for both ambulatory residents or those who need assistance.
- Built-in contoured seat allows the resident to sit comfortably and safely in a slightly reclined position.
- Easy-to-use wall-mounted modular control panel can be positioned for convenient operation by either the resident or caregiver.
- 400 lb Weight Capacity.



RL9 BATH LIFT



The **RL9 Bath Lift** is specifically designed for use with the RG9 Victoria and the RJ15 Caribbean bathing systems. Dependent to semi-dependent residents will experience seamless transfers from bed to bath in a comfortable and safe seat position. Caregivers will enjoy the RL9 for its ease of use and the improved quality of care they can provide the resident.

- Heavy-duty powder coated steel frame for strength and durability
- Powerful and quiet lift actuator with anti-entrapment
- Easy-to-use hand control with magnet
- Rechargeable sealed lead-acid 24V battery with wall-mounted battery charger
- Audio low-battery indicator and alarm
- Emergency stop and lowering functions
- Four sealed twin castors with locking mechanism
- Polymer seat with perineal opening that is easy to clean and disinfect
- Ergonomically designed handles for easy maneuverability
- Armrests designed for resident safety
- Lap and shoulder harness for resident safety
- Corrosion resistant stainless steel and polymer parts

RL8 COMBILIFT



The **RL8** provides a dignified solution for residents requiring assistance getting in and out of recumbent bathtubs. The **RL8 Combi-Lift** is for residents that desire or need to be in a seated position, however, by adding the stretcher components, it can be converted to a stretcher lift for those requiring to be in a supine position. The conversion from a bath chair to a stretcher lift is simple and requires no tools. This unique feature allows the versatility needed to accommodate a broader resident population. The RL8 Chair lift is a bath chair for residents only requiring to be in a seated position. A stretcher-only version is also available.

- Heavy-duty powder-coated steel frame for strength and durability
- Corrosion resistant stainless steel and polymer parts
- Low and narrow chassis that easily maneuvers under beds/tubs
- Powerful and quiet belt drive with anti-entrapment feature
- Foot control on base for raise and lower functions
- Four 4" sealed twin castors with locking mechanism
- Two long-life rechargeable sealed lead-acid 24V batteries
- Foot activated emergency stop
- Safety straps for resident safety

RANE SOLUTIONS & DISINFECTION



Rane's Disinfectant Solution is lemon-scented and that is effective against a wide variety of microorganisms including H1N1 Influenza A virus, TB, MRSA, Hepatitis B/C, VISA, VRE, HIV-1, and pathogenic fungi. Concentrated at a dilution ratio of 2 oz. of disinfectant solution to 1-gallon of water, it is available in 1-gallon bottle, 4 one-gallon bottles per case.



Rane's Shampoo & Body Wash is an exceptionally mild formula designed to leave both hair and delicate skin soft and conditioned. Low foam and lather that rinses easily. It is available in 1-gallon bottles (4 per case).



Rane's Perineal Skin Cleanser contains special conditioners and emollients to soothe and moisturize fragile, sensitive skin and is ideal for incontinence cleansing. It is available in 1-gallon bottles (4 per case).



The **Wall-Mounted Disinfection Cabinet** is a highly efficient system that simplifies disinfection and greatly reduces the possibility of cross-contamination in your bathing and/or showering areas.

The unique mixing valve uses the exact dilution ratio of disinfectant solution for optimal performance against a wide variety of microorganisms and greatly reduces bacterial contamination. The lockable cabinet provides a secure place for disinfectants and cleaning supplies.

Measures 20" (50.8 cm) x 20" (50.8 cm), with a 10' (304.8 cm) coiled hose.

RANE ACCESSORIES

The **Gel Seat Cushion** is made with an ultra-soft viscoelastic polymer gel that will provide both comfort and stability. It is designed to fit perfectly in our extensive line of residential and healthcare facility bathing systems.



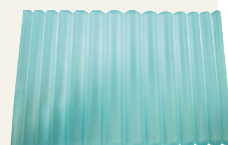
The **Head Pillow**, a soft foam cushion, is held in place by a suction cup. It measures 12" (30.4cm) x 6.5" (16.5cm).



The **Lap & Shoulder Belt**, made of nylon mesh, is a useful accessory for resident safety while bathing. It is available in regular and large size.



The **Gel Pillow** can be used as a seat, neck or back pillow. Once rolled, can be used as knee pillow or foot stopper. It measures 15.9" (40.6cm) x 10" (25.7cm).



SAFETY SINKS & TOILET ACCESSORIES

SAFETY SINKS



Integrated
Handles

Support Washbasin

The **Support Washbasin**, with built-in handles and high weight capacity, provides extra support and increased security in the bathroom. The option of a height adjustable model, makes it ideal for bathrooms used by multiple users with individual needs.

- Available in fixed height, basic height adjustable, and manual height adjustable models.
- Height adjustment range from 26.8" (68 cm) to 38.6" (98 cm) from the floor.
- Optional cover to hide plumbing supply and drain.
- Available with mixer tap on left or right hand side.
- 440 lb (200 kg) maximum weight capacity.



Accessory Kit

Swing Washbasin

The **Swing Washbasin** swings 180°, allowing more space for wheelchair users and making smaller rooms more accessible.

- Users will be able to use the washbasin and the toilet on their own, giving them greater independence.
- 264 lb (120 kg) weight capacity when freestanding, or 440 lb (200 kg) when loaded in docking station.
- Optional accessory kit includes two storage boxes with one insert.
- Must choose either a 10 mm to 1/2" or 10 mm to 3/8" adapter for water supply installation.



Flexi Washbasin

The height adjustable **Flexi Washbasin** unit is easy to reach, whether sitting or standing, and works well in rooms where space is limited.

- At just 20.5" (52 cm) deep, it is perfect for small bathrooms.
- Height adjustment range from 26.8" (68 cm) to 38.6" (98 cm) from the floor.
- Easy to clean smooth surface.
- 220 lb (100 kg) maximum weight capacity

TOILET ACCESSORIES

Toilet Support Arms

The **Toilet Support Arms** provide great support and balance when using the toilet. The Wave design provides the optimal height when standing or sitting.

- All support arms are 35.5" (85 cm) in length .
- Oval shape provides a good, comfortable grip.
- Available in three weight ratings: Wave 80 (175 lb/80 kg), Wave 135 (297 lb/135 kg), Wave 190 (418 lb/190 kg).
- Arms fold away when not in use.
- Optional attachments include a toilet roll holder and a sitting/standing attachment.



Accessory Attachments

Toilevator & Toilevator Grande

The **Toilevator** is a clean & safe alternative to standard raised toilet seats. Users sit on an actual toilet seat, eliminating potential balance issues that may occur with other seat risers.

- Discreet and durable, it fits under existing toilet bases.
- Adds 3.5" (8.9 cm) in height for comfort and ease.
- Measures 11" (27.9 cm) wide and 22" (55.9 cm) long.
- The Toilevator Grande is designed for the newer and larger base toilets, Measures 14.25" (36 cm) wide and 28" (71 cm) long.
- DIY install kit comes complete with all needed parts included and easy to install.
- 500 lb (227 kg) maximum weight capacity.



EASY DIY KIT



SHOWER/COMMUNE CHAIRS

- ✓ INJECTION MOLDED (POLYAMIDE NYLON)
- ✓ ZERO RUST POTENTIAL
- ✓ SUPERIOR FEATURES
- ✓ SIMPLE TO CLEAN & SIMPLE TO USE
- ✓ FIVE YEAR FRAME WARRANTY
- ✓ TWO YEAR MOVING PARTS WARRANTY
- ✓ VIRTUALLY INDESTRUCTIBLE
- ✓ VALUE PRICED



Berlin Shower/Commune Chair

- Ergonomically shaped backrest with integrated grip
- Swinging armrests enable easy side transfer
- Upholstered seat with hygiene opening (available in rear or front)
- Height adjustable, swing and detachable foot support
- 5 inch swivelling castors in the rear with parking/direction brake
- Approved up to 280 lb (130 kg) body weight
- Seat: depth 17.7" (45 cm), width 18.1" (46 cm), height 21.7" (55 cm)
- Toilet height with bucket device: 16.9" (43 cm); without: 18.5" (47 cm)



Dallas Bariatric Shower/Commune Chair

- Aluminum back with PUR backrest
- Swinging armrests enable easy side transfer
- Upholstered seat with hygiene opening
- Height adjustable, swinging and detachable foot support
- 5 inch swivelling castors, in the rear with parking/direction brake
- Approved up to 440 lb (200 kg) body weight
- Seat: depth 18.9" (48 cm), width 25.2" (64 cm), height 22" (56 cm)
- Toilet height with bucket device: 17.5" (44.5 cm); without: 18.7" (47.5 cm)



Phoenix Tilting Shower/Commune Chair

- Adjustable headrest
- Tilting adjustment
- Swinging armrests
- Upholstered PUR seat with hygiene opening
- Includes commode bucket and bucket device
- 4 locking 5 inch swivelling castors
- Approved up to 330 lb (150 kg) body weight
- Seat: depth 15.7" (40 cm), width 17.7" (45 cm), height 22.8" (56 cm)
- Toilet height with bucket device: 17.5" (44.5 cm); without: 18.7" (58 cm)

SHOWERING SOLUTIONS

Folding Shower Seat

The Folding **Shower Seat** is ideal for bathrooms where support is needed during bathing and where space is restricted. The shape ensures secure and pleasant showering.

- Shower seat has a maximum weight capacity of 330 lbs (150 kg) or is available with a support leg to increase the weight capacity to 440 lbs (200 kg).
- The optional back support can be adjusted with just one hand and comes with or without arm supports.
- The seat, measuring 18.5" wide x 21.7" deep is made with a comfortable material that does not feel cold or hard.
- Seat folds away when not in use.



Shower/Changing Bed

The **Height Adjustable Shower/Changing Bed** can be used with the need for only one person for assistance.

- Shower/Changing Bed folds away when not in use to free up space.
- Hand Control to adjust the bed height 12" (30 cm) to 40" (100 cm) from the floor.
- Maximum weight capacity of 330 lbs (150 kg).
- Standard length is 70" (178 cm), but available by special order in lengths of 57.5" (146 cm) or 82.7" (210 cm).



**Hand Control for
Shower/Changing Bed**
for height adjustment saves
time when transferring and
makes for a better work
environment for caregivers



GRAB BARS & MOBILITY SYSTEM

GRAB BARS



Stainless Steel Grab Bars

The **Grab Bar** is for people who need a little more support in their bathroom. They can also serve as towel rails.

- Smooth surface makes it easy to clean.
- Available in two lengths, 18" or 24".



Grab Easy Grab Bars

The **Grab Easy** is a grab bar featuring the unique Safety-Grip system. This non-slip grab bar is innovative, strong and solid - giving optimum confidence and enhanced independence. The Grab Easy won't twist, turn or slip...perfect grip - every time!

Available sizes:

14" (35.5 cm)

24" (61 cm)

36" (91.4 cm)

46" (116.8 cm).

24" x 24" (61 cm x 61 cm) adjustable 'V' style

Color Options:

White

Pale Blue Glow-in-the-Dark

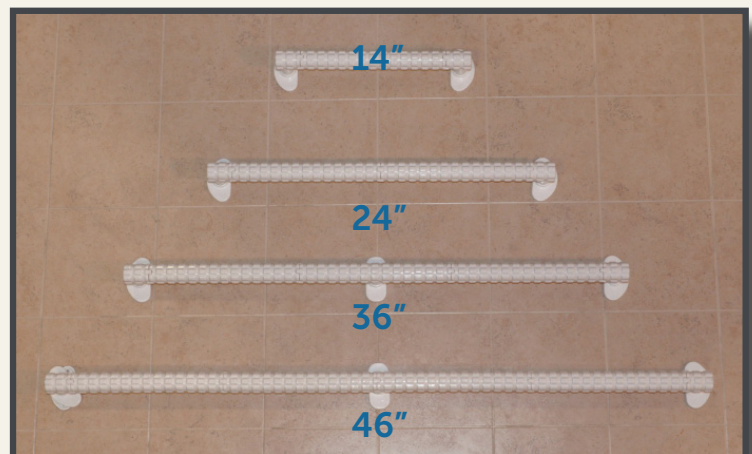


Pale Blue

Glow in the Dark



24" x 24" Adjustable V Style Grab Easy Grab Bar can be positioned to suit individual needs



EASY RANGE™ MOBILITY SYSTEM



The EasyRange™ features everything needed to get about safely and securely. Antimicrobial and antibacterial certified, it can be customized to suit your individual need.

Easy Range™ Mobility System

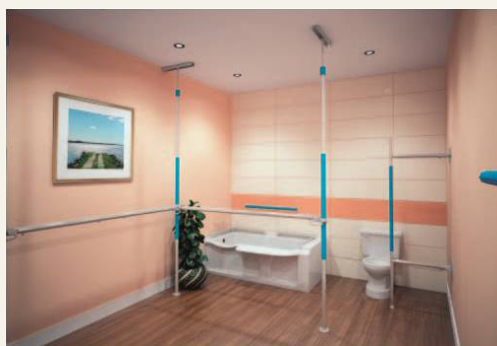
The result of careful research, design and extensive testing, the Easy Range is the world's sturdiest pole system. The patents-pending, non-slip surface with its 1 3/4 inch diameter is scientifically developed for optimum grasping capability, eliminating twists, turns, and slips. This unique grip is conveniently placed from the bottom to the top of the pole- making it compatible for patients of all heights.

The EasyRange™ is also highly adaptable to fit each patient's needs- effectively allowing you to create a "fall-free zone." It's the only "grip safe, grip anywhere" wall-mounted mobility system. It can withstand up to 350 lbs of bearing weight- vastly reducing stress and injuries in caregivers assisting patients.

Innovative, strong, and solid- the customizable EasyRange™ Wall-Mounted Mobility System gives optimum confidence and enhanced independence.



Featuring innovative **SafetyGrip** from the bottom to the top



EasyRange™ aids in sitting, standing, and safely moving from point A to B. Whether moving from the bed, chair, or bathroom, **EasyRange™** delivers safety, support, and independence.



HEIGHT ADJUSTABLE KITCHEN CABINETS



VertilInside

The **VertilInside** cabinet shelving system features height adjustable inside shelving that lowers out of the upper wall cabinet to place contents within reach, all without opening the cabinet doors. These are an excellent adaptation solution for pre-existing cabinet units.

- Fitted inside the cabinet with minimum interior dimensions of 27.7" (100 cm) in height, 10.4" (26.5 cm) deep, and 19.6" (50 cm) wide.
- Available by special order in widths from 15.7" (40 cm) to 39.4" (100 cm).
- Adjustable down by 19.4" (49.3 cm)

System does not include cabinets.



VertiElectric (SPECIAL ORDER)

The **VertiElectric** height adjustable cabinet frame system brings your kitchen cabinets to you. The entire upper wall cabinet moves vertically, allowing the user to see and reach inside.

- Height adjustable down by 11.8" (30 cm).
- Can accommodate cabinets measuring 27.5" (70 cm) to 35.4" (90 cm) in height, with widths from 15.7" (40 cm) to 47.2" (120 cm).
- Frame system is invisible when cabinets are mounted.

System does not include cabinets.



Diagonal (SPECIAL ORDER)

The **Diagonal** cabinet frame system is height adjustable, bringing the entire whole upper wall cabinet down and forward to the edge of the countertop. By pushing the control button, everything in the cabinet is within reach.

- Adjusts in a diagonal motion- 16.9" (43 cm) down and 7" (18 cm) forward.
- Can accommodate cabinets measuring 27.5" (70 cm) to 35.4" (90 cm) in height, with widths from 15.7" (40 cm) to 47.2" (120 cm).

System does not include cabinets.

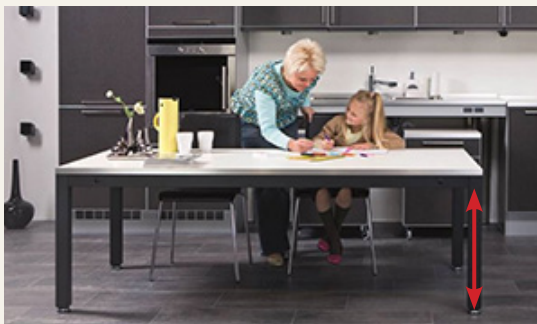
HEIGHT ADJUSTABLE WORKTOPS & TABLES

FlexiElectric Worktop Frame

Having the worktop adjusted to the perfect height makes a big difference for each activity. Different heights are needed to knead dough, stir pots, chop vegetables, or wash up. The **FlexiElectric height adjustable worktop frame system**, promotes self-sufficiency and creates optimal working conditions.

- Allows seated users more legroom and the freedom to move around with ease.
- Can accommodate worktops with a length of 78.75" (200 cm) and a depth from 22.8" (58 cm) to 24.4" (62 cm).
- Height adjustment range from 25.5" (65 cm) to 37.4" (95 cm).

Frame system does not include worktop surface.



Brake Wheels



4Single Table Frame

The **4Single** table frame is ideal for the whole family- adults, children, and wheelchair users. The height adjustment feature allows it to be used for sitting or standing work.

- Multifunctional- can be used in the kitchen, dining room, or office- for whatever suits the user's needs.
- Height adjustment range from 25.5" (65 cm) to 37.4" (95 cm).
- Available in two sizes: 39.5" (100 cm) x 65" (165 cm) or 39.5" (100 cm) x 86.5" (220 cm),
- Optional brake wheels make it easy to move the table.
- Optional rechargeable battery control allows even more mobility and last up to three months when fully charged.

Frame does not include tabletop surface.



about Rane

- Founded in 1990 by a pioneer in the walk-in tub industry.
- Family owned and operated by three generations with a combined 80 years of experience.
- Large enough to serve, small enough to care.
- Manufactured in Sparta, Tennessee at our 50,000 square foot state-of-the-art facility from the highest quality materials.
- Centrally located, providing quick turnaround time.
- Increased customer satisfaction with our commitment to quality, safety, and innovation.
- All tub models are fully assembled, factory tested, and shipped out ready to install, saving our customers time and money
- As a manufacturer of both healthcare facility and residential products, our residential line meets the same quality standards as our healthcare facility line.
- Range of tub models to meet many needs, including built-in or freestanding models, inward or outward swinging doors, smaller models for limited spacing, and models with roomy seating for persons of size.
- Unique range safety and accessibility products to meet special needs, and increase independence and freedom.
- Nationwide customer service and sales support, with sales, service, and training personnel throughout North America
- Exclusive U.S. dealer of Ropox products.
- Member of the ACMA and BBB.



Jim DeKraker, founder of Rane Bathing Systems, in his prototype design for the first side-entry bathing system in 1976



Rane's 56,000 square foot manufacturing facility in Sparta, Tennessee